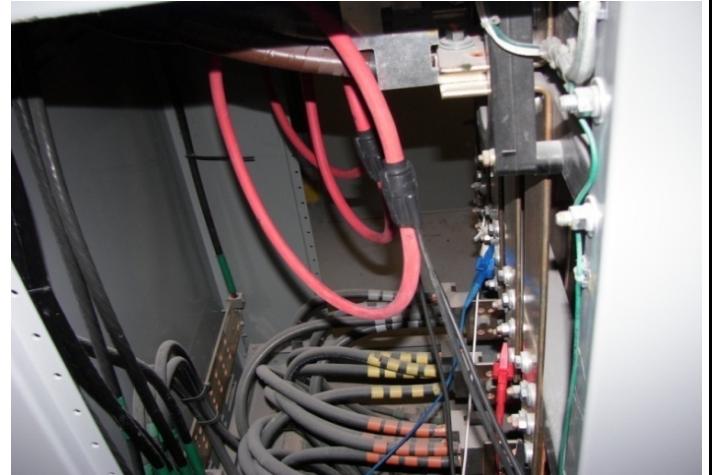


Power Monitoring



General Information

Customer: Sample Facility

Equipment: **ATS CR**
1200Amp 277/480Volt
First Floor
Emergency Distribution Room
Space P-107

Dates: **From 07/09/2008**
To 08/11/2008

Note:

Logger No. E1134-01

Data Summary

Equipment Energized	A Phase or Ch 1	B Phase or Ch 2	C Phase or Ch 3
Minimum Voltage	274 V	273 V	272 V
Maximum Voltage	284 V	283 V	284 V
Maximum Current	400 A	400 A	500 A
Frequency	60 Hz		

Analysis

It is recommended to keep the voltage within 7 1/2% variance of the desired potential.

In this case the desired voltage is 277 V. Therefore a minimum of 256 V and a maximum of 298 V are acceptable.