

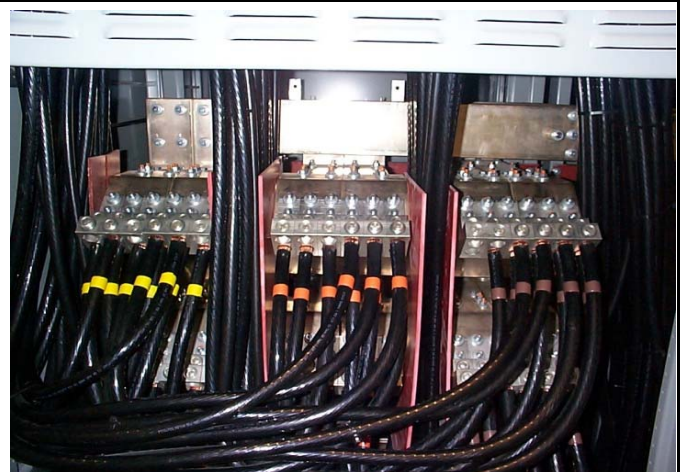
## Power Quality Inspection

Customer: **Sample Customer**

Date: 9/1/2008

Facility: **Sample Facility**

**Server Room - Panel CB**



### SUMMARY

Two sets of power readings were taken at ATS #1.

One set was taken while under "normal" power, (power supplied by local utility) and the other while being fed by the generator.

In both cases, no discrepancies were found. The harmonic level, voltage ratings and current balance were found to be satisfactory.